

Human IL-23R Protein; hFc Tag

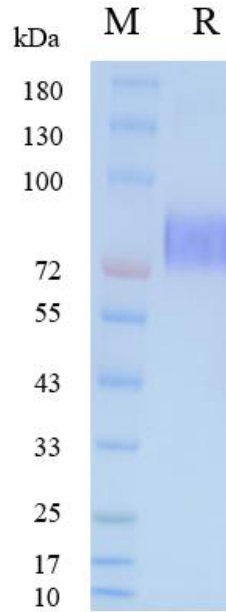
Product Information

Product Name	Human IL-23R Protein; hFc Tag
Storage temp.	Store at $\leq -70^{\circ}\text{C}$, stable for 6 months after receipt. Recommend to aliquot the protein into smaller quantities for optimal storage. Please minimize freeze-thaw cycles.
Catalog# / Size	GM-87925RP-100 / 100 μg GM-87925RP-1000 / 1 mg

Protein Information

Alternative Names	IL-23 R,IL-23 Receptor
Source	Human IL-23R Protein; hFc Tag (GM-87925RP) is expressed from human 293 cells (HEK-293). It contains AA Gly 24 - Gly 355 (Accession # Q5VWK5-1). This protein carries a hFc tag at the C-terminus.
Purity	> 90% as determined by SDS-PAGE
Endotoxin	< 1 EU/ μg , determined by LAL gel clotting assay
Predicted Mol Mass	62.0 KDa
Formulation	Supplied as a 0.2 μm filtered solution of PBS, pH7.4.
Description	<p>IL23R (Interleukin-23 receptor) is a transmembrane protein that, together with IL-12Rβ1, forms the IL-23 receptor complex. It is primarily expressed on immune cells such as Th17 cells, natural killer (NK) cells, macrophages, and dendritic cells. IL23R binds to IL-23 and activates the JAK-STAT3 signaling pathway, promoting inflammatory responses in the immune system. Its role is critical for the survival and maintenance of Th17 cells, which secrete pro-inflammatory cytokines such as IL-17 and IL-22.</p> <p>Research has shown that IL23R plays a significant role in various inflammatory and autoimmune diseases, such as Crohn's disease, ulcerative colitis, psoriasis, and ankylosing spondylitis. Gain-of-function mutations in the IL23R gene can enhance IL-23 signaling, leading to excessive inflammatory responses, while certain loss-of-function mutations can reduce the risk of specific inflammatory diseases. As a result, therapies targeting the IL-23/IL23R axis (e.g., blocking the p19 subunit of IL-23) have become an important strategy for treating related diseases, with drugs like guselkumab showing significant efficacy.</p>

SDS-PAGE

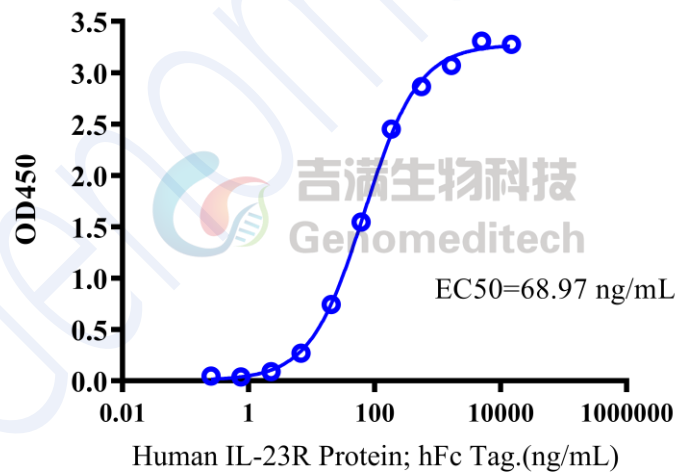


On SDS-PAGE under reducing (R) condition. The gel was stained overnight with Coomassie Blue. The purity of the protein is greater than 90%.

Bioactivity-ELISA

Bioactivity-ELISA

0.6 μg Anti-His mIgG2a Antibody+0.2 μg Human IL-23 alpha&IL-12 beta Heterodimer Protein; His Tag of per well



Human IL-23A&IL-12B Heterodimer Protein; His Tag (Catalog # GM-87924RP) was immobilized at 2 $\mu\text{g}/\text{ml}$ (100 $\mu\text{L}/\text{well}$) on Anti-His mIgG2a Antibody (Catalog # GM-59493AB) (0.6 $\mu\text{g}/\text{well}$) precoated. Increasing concentrations of Human IL-23R Protein; hFc Tag (Catalog # GM-87925RP) were added.